

2008 - 2009
Georgia Special Needs
Scholarship Program
End of School Year Report

For Georgia General Assembly
(O.C.G.A. 20-2-2118)

Georgia Department of Education
2008 – 2009 Georgia Special Needs Scholarship Program
End of School Year Data Report

Executive Summary

Senate Bill 10 as signed into law on May 18, 2007, created the Georgia Special Needs Scholarship (GSNS) Program which allows parents of eligible special needs students to transfer their children to another public school, public school system, state school, or approved participating private school.

The report contained herein represents the results for the 2008 - 2009 school year as required by O.C.G.A. § 20-2-2118, which stipulates that the Governor's Office of Student Achievement, in conjunction with the Georgia Department of Education shall provide the General Assembly not later than December 1 of each year with a report regarding the scholarship program for the previous fiscal year.

2008 - 2009 Program Highlights

- Number of participating private schools increased from 117 private schools in 2007-2008 to 145 private schools in 2008-2009, an increase of 28 schools.
 - ➔ 12 was the average number of students enrolled in private schools.
 - ➔ 1 - 60 was the range of students enrolled in each private school.
 - ➔ 10 private schools did not enroll any students under the GSNS Program.
- Public school student participation in the program increased by 697 with 1,596 students enrolled in private schools at the start of the 2008 - 2009 school year.
- Of the 825 students that completed the 2007 - 2008 school year in the GSNS Program, 675 enrolled at private schools to continue participation in the 2008 - 2009 school year.
- Of the 1,596 students enrolled:
 - ➔ 31% Female, 69% Male.
 - ➔ 39% Black, 56% White, 5% Asian/Hispanic/Native American/Multi-Racial.
 - ➔ 32% Eligible for Free and Reduced Lunch, 68% Not Eligible for Free and Reduced Lunch.
 - ➔ 316, or 23% were fifth grade students; the largest grade represented.
 - ➔ 457 or 29% had a disability type of Other Health Impairment.
 - ➔ 447 or 28% had a disability type of Specific Learning Disability.
- \$9,294,728 was paid in FY09 for the scholarships to students.
- \$6,331 was the average annual scholarship amount for students.
- \$2,592 - \$13,586 was the range for individual scholarship amounts.
- At the end of the 2008 - 2009 school year, 1,463 students were enrolled in private schools; a decrease of 133 students or approximately 8%.

Georgia Department of Education
2008 – 2009 Georgia Special Needs Scholarship Program
End of School Year Data Report

2008 - 2009 Georgia Special Needs Scholarship Program Students' Pre/Post Assessment and Information:

- Private schools were asked to provide pre- and post-assessment information on GSNS students enrolled at their schools for the subjects of Reading and Math.
- At the end of the school year, private schools with scholarship students, submitted assessment information for 1,464 students.
- Private schools reported the following:

Math

- 23% of their students showed progress of less than one year.
- 11% of their students showed no progress.
- 36% of their students showed progress of one school year.
- 30% of their students showed progress of more than one school year.

Reading

- 21% of their students showed progress of less than one year.
- 12% of their students showed no progress.
- 37% of their students showed progress of one school year.
- 30% of their students showed progress of more than one school year.

**Georgia Department of Education
2008 - 2009 Georgia Special Needs Scholarship Program
End of School Year Report**

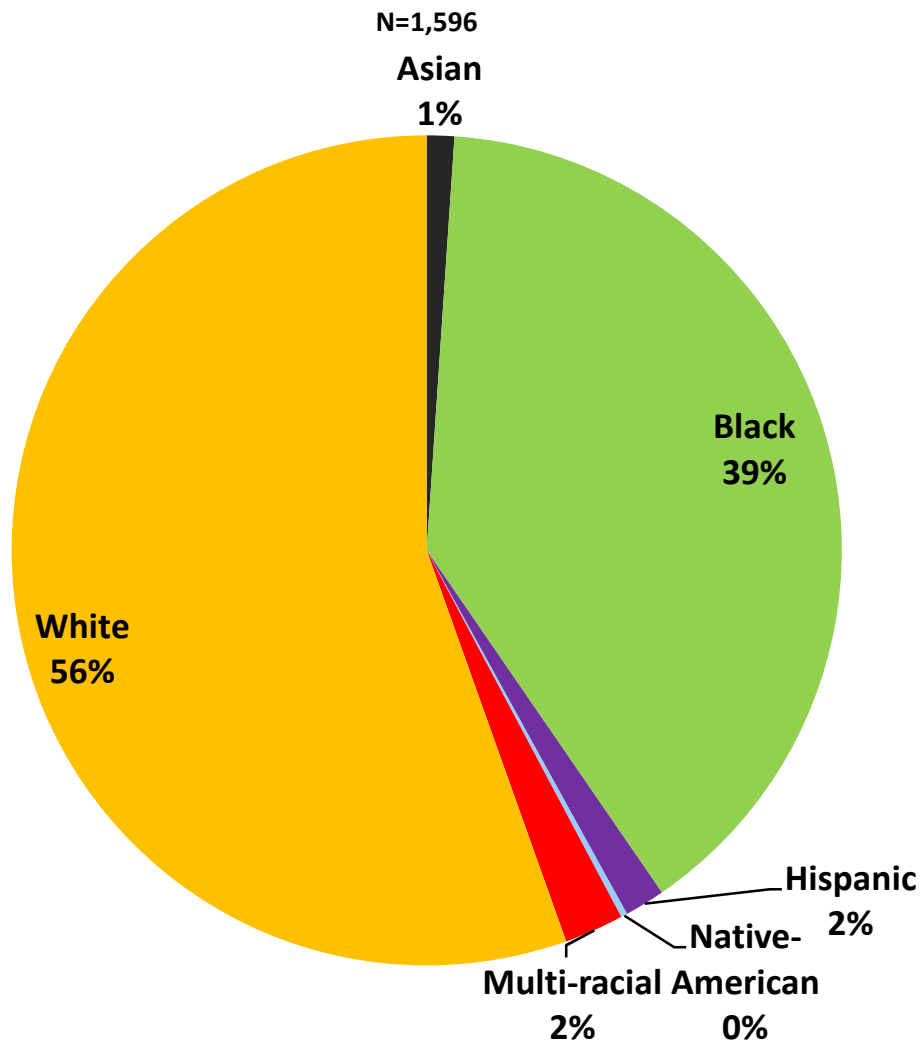
Description	Value
Total number of Private Schools submitting an application for participation in 2008 - 2009 school year.	152
Total number of Private Schools Participating in GSNS for 2008-2009 School Year.	145
Total number of Private Schools with enrolled Scholarship Students.	135
Number of Private Schools with 10 or More Students.	52
Number of Private Schools with Less than 10 Students.	83
Total number of Students Receiving Scholarships.	1,596
Highest Enrollment in a Single School.	60
Number of Returning Private Schools.	117
Number of New Private Schools Participating in the Program.	28
Average number of Scholarship Students Per School.	12
Range of Student Enrollment for the 135 Participating Private Schools.	1 - 60
Georgia Public School Systems Impacted by Scholarship Student Withdrawals.	63
Range of Special Need Scholarship Withdrawals in Georgia Public School Systems.	1 - 282

Financial Information	Amount
Total Scholarship Payments Statewide for FY09.	\$9,294,728
Range of Annual Scholarship Amounts for GSNS Students.	\$2,592 to \$13,586
Median Scholarship Payment for the 1,596 students.	\$6,153
Average Annual Scholarship Amount for the 1,596 students.	\$6,331

**Georgia Department of Education
2008 - 2009 Georgia Special Needs Scholarship Program
End of School Year Report**

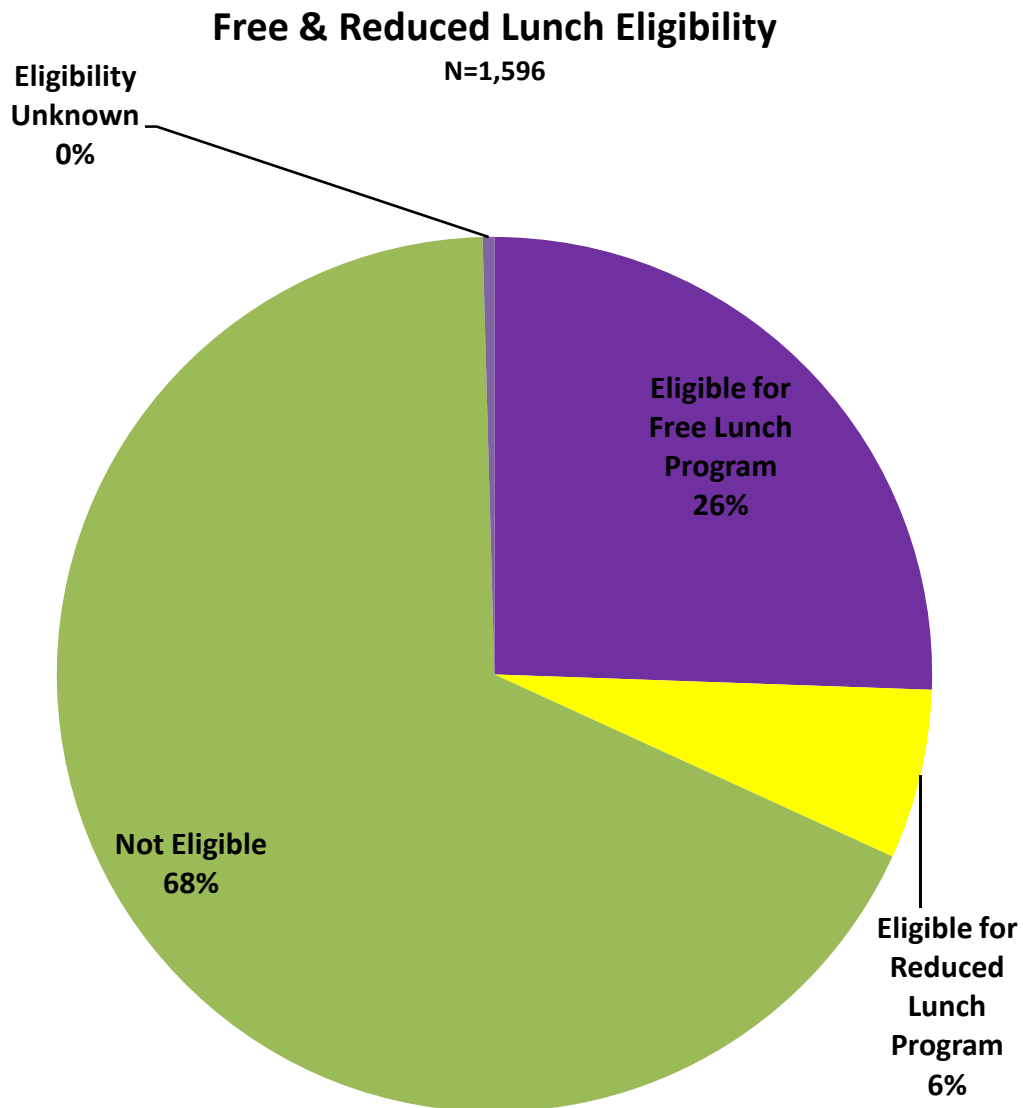
Race/Ethnicity	Count	Percentage
Asian	17	1.1%
Black	628	39.3%
Hispanic	25	1.6%
Native-American	4	0.3%
Multi-racial	37	2.3%
White	885	55.5%
Total	1,596	100%

GSNS Students by Race & Ethnicity



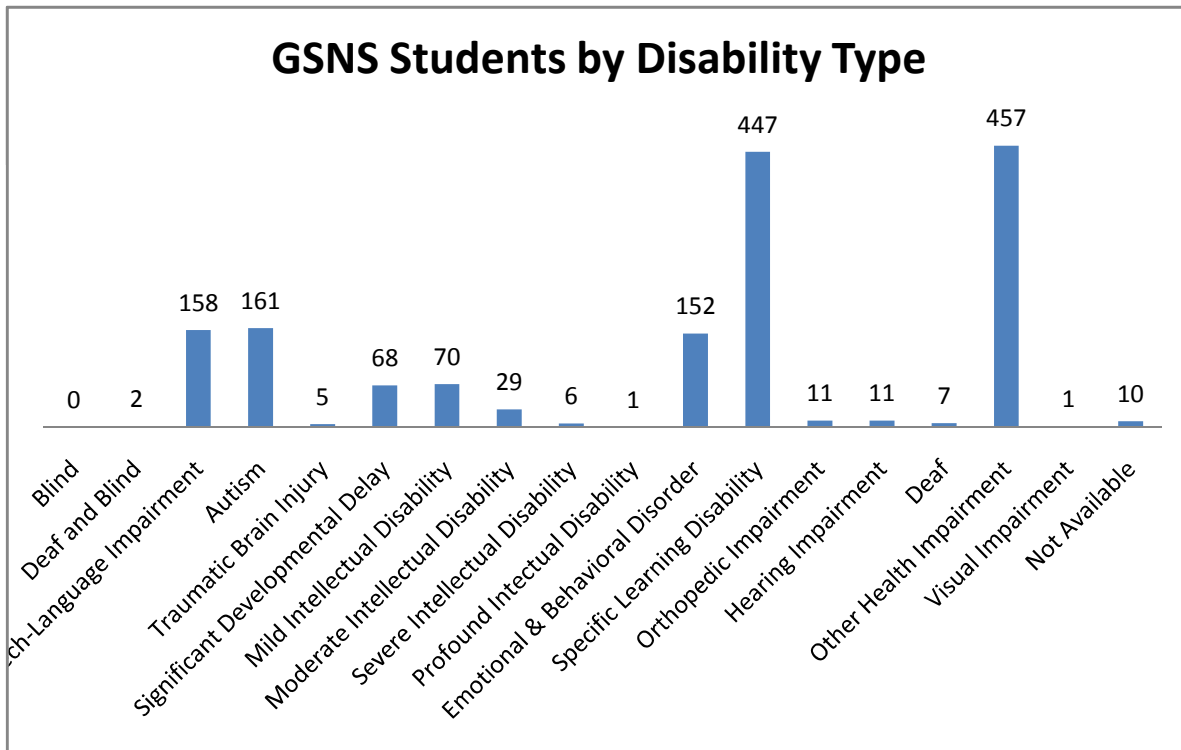
**Georgia Department of Education
2008 - 2009 Georgia Special Needs Scholarship Program
End of School Year Report**

Eligibility	Count	Percentage
Eligible for Free Lunch Program	408	25.6%
Eligible for Reduced Lunch Program	100	6.3%
Not Eligible	1,081	67.7%
Eligibility Unknown	7	0.4%
Total	1,596	100%



**Georgia Department of Education
2008 - 2009 Georgia Special Needs Scholarship Program
End of School Year Report**

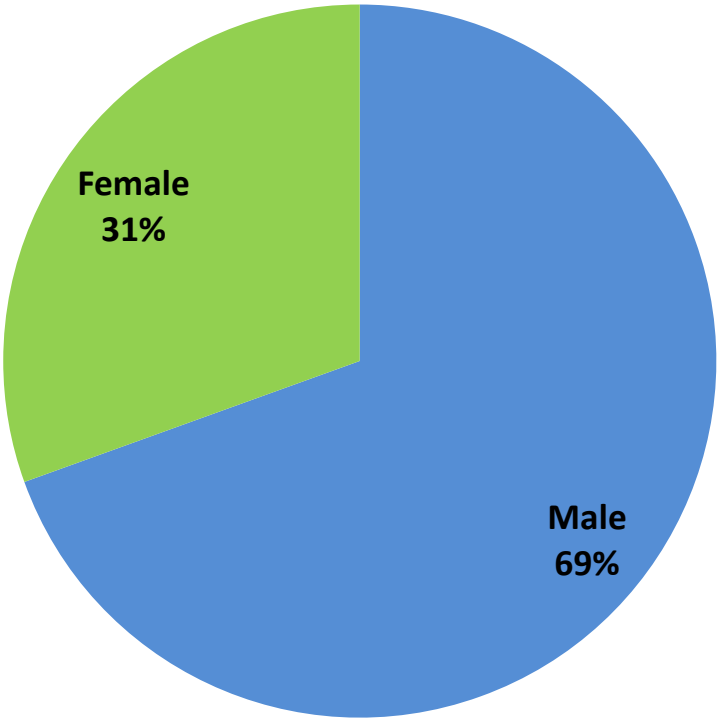
Program code	Disability Type	Count	Percentage
1	Blind	0	0.0%
2	Deaf and Blind	2	0.1%
3	Speech-Language Impairment	158	9.9%
6	Autism	161	10.1%
7	Traumatic Brain Injury	5	0.3%
8	Significant Developmental Delay	68	4.3%
P	Mild Intellectual Disability	70	4.4%
Q	Moderate Intellectual Disability	29	1.8%
R	Severe Intellectual Disability	6	0.4%
S	Profound Intectual Disability	1	0.1%
T	Emotional & Behavioral Disorder	152	9.5%
U	Specific Learning Disability	447	28.0%
V	Orthopedic Impairment	11	0.7%
W	Hearing Impairment	11	0.7%
X	Deaf	7	0.4%
Y	Other Health Impairment	457	28.6%
Z	Visual Impairment	1	0.1%
NA	Not Available	10	0.6%
	Total	1,596	100%



**Georgia Department of Education
2008 - 2009 Georgia Special Needs Scholarship Program
End of School Year Report**

Gender	Count
Male	1,109
Female	487
Total	1,596

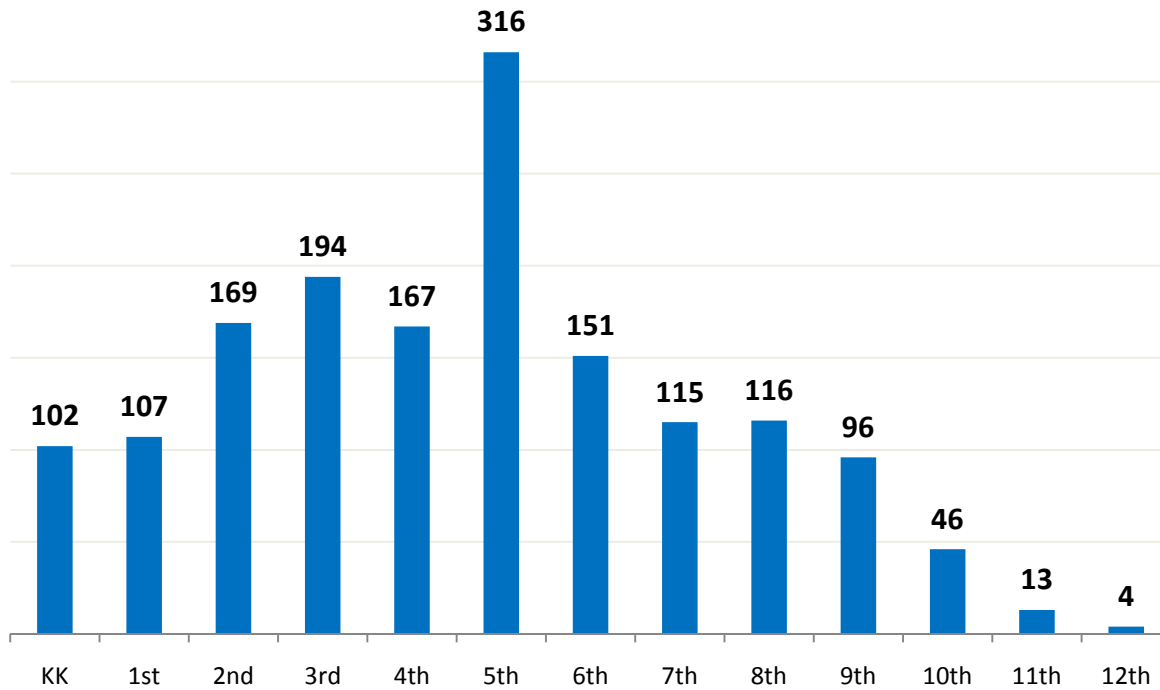
GSNS Students by Gender
N=1,596



**Georgia Department of Education
2008 - 2009 Georgia Special Needs Scholarship Program
End of School Year Report**

Grade in 2006-2007	Count	Percentage
KK	102	6.4%
1st	107	6.7%
2nd	169	10.6%
3rd	194	12.2%
4th	167	10.5%
5th	316	19.8%
6th	151	9.5%
7th	115	7.2%
8th	116	7.3%
9th	96	6.0%
10th	46	2.9%
11th	13	0.8%
12th	4	0.3%
Total	1,596	100%

GSNS Students by Grade for 2008-2009

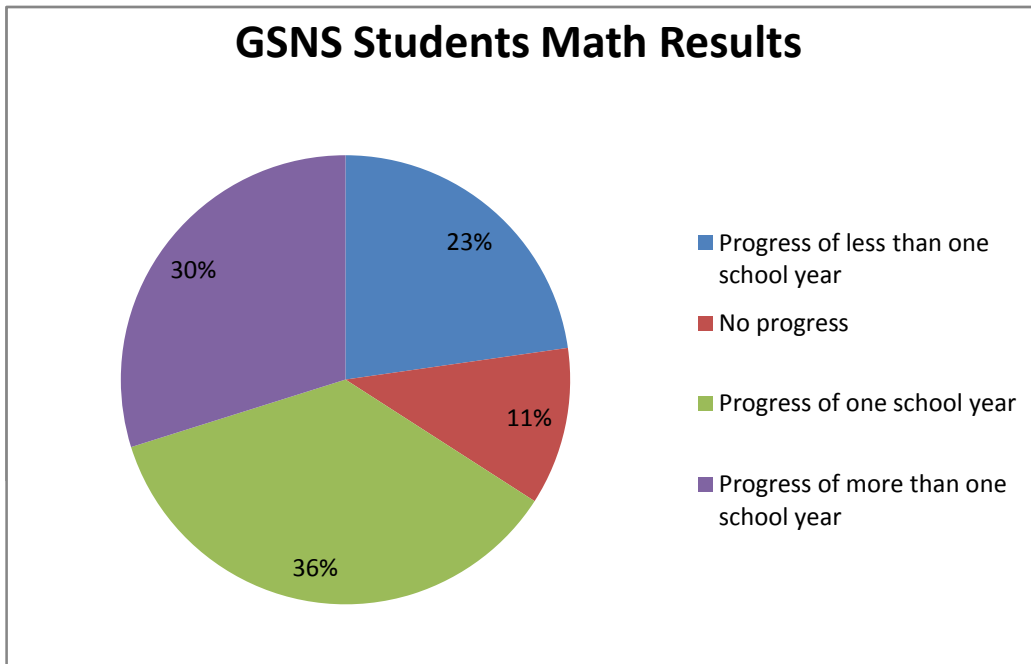


**Georgia Department of Education
2008 - 2009 Georgia Special Needs Scholarship Program
End of School Year Report**

2008 - 2009 Georgia Special Needs Scholarship Program Students' Pre/Post Assessment and Information:

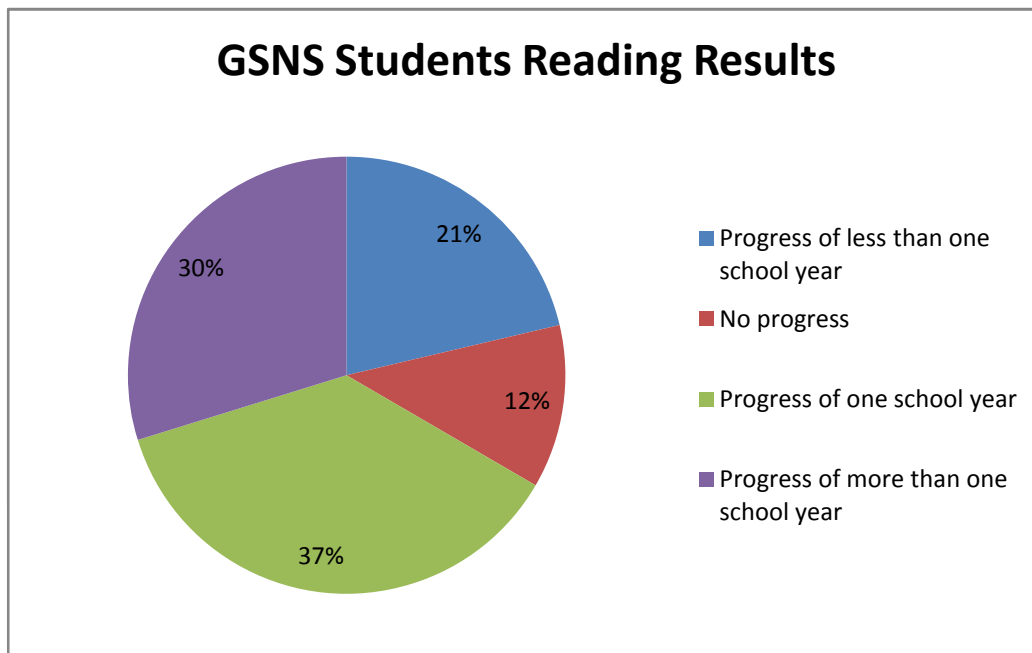
- Private schools were asked to provide pre- and post-assessment information on GSNS students enrolled at their schools for the subjects of Reading and Math.
- Students were assessed with over 55 different types of assessment instruments, e.g., the Iowa Tests of Basic Skills, Stanford Achievement Tests.
- Four students, via parent request, participated in the State assessment system in their resident school.
- At the end of the school year, private schools with scholarship students, submitted assessment information for 1,464 students.

Subject: Math	Count	Percentage
Progress of less than one school year	333	23%
No progress	166	11%
Progress of one school year	528	36%
Progress of more than one school year	437	30%
The number of students reported who had pre- and post-assessment scores.	1,464	100%



**Georgia Department of Education
2008 - 2009 Georgia Special Needs Scholarship Program
End of School Year Report**

Subject: Reading	Count	Percentage
Progress of less than one school year	312	21%
No progress	177	12%
Progress of one school year	539	37%
Progress of more than one school year	436	30%
The number of students reported who had pre- and post-assessment scores.	1,464	100%



**Georgia Department of Education
2008 - 2009 Georgia Special Needs Scholarship Program
End of School Year Data Report**

Number of Enrolled Students by School Year

Private School Name	07-08 Year 1	08-09 Year 2	09-10 Year 3
A School for Children, Inc.	█	15	16
A Time 4 Learning	█	28	25
ABC Montessori School	█	█	*
ADVANCE Academy	*	*	*
Advance Learning Center	*	13	11
Alexsander Academy	█	*	*
Alice Blount Academy	█	█	*
Amit, Inc.	*	10	12
Anointed Word Christian Schools International	*	*	*
Ash Tree Learning Center	█	13	15
Atlanta Speech School	*	*	*
Augusta Christian Schools	█	17	18
Aurora Strategies	*	10	10
Ava White Academy	*	*	*
Barnes Academy	█	█	*
BaSix Knowledge Academy	█	█	*
Bedford School, Inc.	42	60	64
Bible Baptist Christian School	*	10	11
Blessed Sacrament School	*	*	*
Branch Christian Community School	21	43	62
Brandon Hall	*	*	*
Bristol Oaks School	█	█	*
Brookwood Christian Language School	13	22	19
Brunswick Chrisitan Academy	*	*	*
BTOC dba Georgia Christian Academy	█	*	*
Byron Christian Academy	█	█	*
C.H. Terrell Academy	█	*	*
Cameron Academy	█	17	38
Center Academy	█	19	33
Central Fellowship Christian Academy	*	*	*
Chatham Academy at Royce	19	24	34
Christian Heritage School	*	*	*
Chrysalis Experiential Academy, Inc.	*	13	*
Clara Mohammed Elementary and W. Deen Mohammed High School	10	*	11
Clearwater Academy	█	*	*
Community Christian School	*	*	*
Community School	*	*	*
Cornerstone Christian Academy	*	*	*

**Georgia Department of Education
2008 - 2009 Georgia Special Needs Scholarship Program
End of School Year Data Report**

Number of Enrolled Students by School Year

Private School Name	07-08 Year 1	08-09 Year 2	09-10 Year 3
Cornerstone Community Services Learning Academy	*	*	*
Cornerstone Preparatory Academy	*	*	*
Cornerstone Schools	10	18	17
Cottage School	37	55	57
Counterpane	*	*	*
Covenant Christian Academy	*	*	*
Covenant Christian Ministries Academy	■	*	*
Creekside Christian Academy	■	■	*
Cumberland Academy of Georgia	■	14	27
Dawson Street Christian School	12	24	26
Decatur Adventist Junior Academy	*	*	*
Dominion Christian High School	*	*	12
Eagle's Landing Christian Academy	*	*	*
Eaton Academy, Inc.	*	14	14
Emory Christian School	*	■	■
Evangel Temple Christian Academy	■	*	*
Evans Christian Academy	■	*	*
Faith Christian Academy	15	18	24
Fayette Christian School	13	*	13
Focus Learning & Enrichment Academy	*	■	■
Footprints Christian Academy	14	24	31
Foundations for the Future	■	■	*
Frederick J.Furtah Preparatory School	42	50	53
Fullington Academy	*	■	■
Gables Academy- Johns Creek	■	■	*
Gables Academy- Stone Mtn	*	*	10
Green Pastures Christian School	■	18	22
Greenforest McCalep Christian Academy	■	*	*
Heart of Hope Academy for Children with Special Needs	*	*	*
Heritage Academy	■	*	*
Heritage Christian School	■	■	*
Holy Innocents' Episcopal School	■	*	*
Holy Spirit Preparatory School	*	*	*
Hope Christian Academy	■	*	*
Hope Christian School of Augusta	19	36	24
Hope Schools of Excellence	*	*	*
Hopewell Christian Academy	24	35	39
Horizon Christian Academy	*	11	14

Georgia Department of Education
2008 - 2009 Georgia Special Needs Scholarship Program
End of School Year Data Report

Number of Enrolled Students by School Year

Private School Name	07-08 Year 1	08-09 Year 2	09-10 Year 3
Horizons School	*	10	12
IJT Development Center	■	*	*
Integrity Christian Academy	■	31	37
Jacob's Ladder	*	*	11
John Hancock Academy	*	*	*
John L. Coble Elementary	■	*	*
Kaleidoscope Applied Behavior Analysis, Inc.	*	*	*
Katherine and Jacob Greenfield Hebrew Academy of Atlanta	*	*	*
Keren Jewish High School	■	*	■
Kingdom Academy	*	*	*
Kingfisher Academy	*	*	*
LaGrange Academy	*	*	*
Lakeside Preparatory School	13	17	*
Light of the World Christian Academy of Atlanta	■	*	*
Lighthouse Christian Academy, Jonesboro	■	10	28
Lighthouse Christian Academy, Clarkesville	*	*	■
Lionheart School	*	*	*
Lithia Christian Academy	■	*	14
McGinnis Woods Country Day School	*	*	*
Memorial Day School	*	11	17
Mill Springs Academy	29	56	76
Miller's Preparatory Academy for Boys	29	45	44
Monroe Academy	■	*	■
Montessori Academy at Sharon Springs	■	■	*
Mount de Sales Academy	*	*	*
Mount Paran Christian School	*	*	*
Mount Pisgah Christian School	■	*	*
Mountain Area Christian Academy	■	*	*
New Beginning Christian School	*	*	*
New Birth Christian Academy	■	*	14
North Cobb Christian School	■	■	*
Oasis Learning Center	*	*	■
Ombudsman Educational Services at College Living Prep	*	■	■
Omega Learning Center- Acworth	■	*	19
Omega Learning Center- Douglasville Loc	■	■	17
Omega Learning- Marietta Loc	■	■	*
Our Lady of Mercy Catholic High School	*	*	*
Owens Academy for Exceptional Learners	13	■	*

Georgia Department of Education
2008 - 2009 Georgia Special Needs Scholarship Program
End of School Year Data Report

Number of Enrolled Students by School Year

Private School Name	07-08 Year 1	08-09 Year 2	09-10 Year 3
Paideia School	*	*	*
Pathways Academy	*	13	11
Peachtree Academy Private School	*	*	*
Perimeter Christian School	*	0	*
Phyl's Academy Preparatory School	█	█	*
Porter Academy	15	25	31
Prince Avenue Christian School	█	█	*
Providence Christian Academy	█	*	*
Riverside Military Academy	█	█	*
Rock Solid Foundations Christian Academy	25	█	█
Saint Catherine of Siena Catholic School	*	*	*
Saint Francis Day School	28	45	64
Saint Joseph Catholic School	*	*	*
Saint Paul Academy	18	37	36
Saint Peter Claver Regional Catholic School	*	*	*
Saint Teresa's School	*	*	*
Sherwood Christian Academy	*	*	*
Shiloh Hills Christian School	*	*	*
Shoal Creek Adventist School	█	*	█
Skipstone Academy	█	*	14
Solid Foundation, Inc.	█	14	33
Solid Rock Academy	30	46	49
Sophia Academy	14	27	23
Sound Start	█	*	*
Southside Christian School	█	*	11
Special Needs Schools of Gwinnett, Inc.	14	20	21
Stepping Stones Educational Therapy Center, Inc.	10	17	32
Street School Academy	█	*	*
Summit Learning Center, INC	█	*	*
The 504 School	█	*	*
The Campus	*	12	31
The Friends School of Atlanta	*	10	11
The Hirsch Academy	*	*	10
The Howard School	19	38	53
The Joseph Sams School	12	15	13
The Lighthouse	12	12	27
The Ron Clark Academy	*	*	*
The Schenck School	22	32	43

**Georgia Department of Education
2008 - 2009 Georgia Special Needs Scholarship Program
End of School Year Data Report**

Number of Enrolled Students by School Year

Private School Name	07-08 Year 1	08-09 Year 2	09-10 Year 3
The Swift School	33	50	41
TLE Christian Academy	*	*	*
Torah Day School of Atlanta	*	*	*
Trinity Chapel Academy	*	*	*
Unity Christian School	■	■	*
Victorious Kidz Christian Academy	■	■	*
Victory World Christian School	■	■	*
Vineyard Harvester Christian Academy	*	■	■
Waverly Hall Christian Academy	*	*	10
Westminster Schools of Augusta	*	*	*
Wildwood Christian Academy	■	■	*
Woodfield Academy	25	45	60
Woodlee's Christian Academy	11	23	21
Woodward Academy	*	*	17
Yeshiva Atlanta High School	*	■	■
Total	899	1,596	2,068

* A school had less than 10 students.

■ A school did not participate in the GSNS Program.

Georgia Department of Education
2008 - 2009 Georgia Special Needs Scholarship Program
End of School Year Report

The table below lists the local education agency (LEA) for students participating in the Georgia Special Needs Scholarship Program.

LEA	Count of Students	Percentage of Students enrolled in GSNS
Baldwin	3	0.19%
Banks	3	0.19%
Barrow	2	0.13%
Bartow	3	0.19%
Bibb	35	2.19%
Bryan	4	0.25%
Bulloch	1	0.06%
Butts	2	0.13%
Camden	12	0.75%
Carroll	17	1.07%
Chatham	92	5.76%
Cherokee	44	2.76%
Clarke	1	0.06%
Clayton	71	4.45%
Cobb	187	11.72%
Columbia	25	1.57%
Coweta	19	1.19%
Crawford	2	0.13%
Dawson	3	0.19%
DeKalb	196	12.28%
Dougherty	16	1.00%
Douglas	10	0.63%
Effingham	3	0.19%
Fayette	59	3.70%
Floyd	1	0.06%
Forsyth	54	3.38%
Fulton	282	17.67%
Glynn	1	0.06%
Gordon	1	0.06%
Gwinnett	166	10.40%
Habersham	3	0.19%
Hall	6	0.38%
Hancock	1	0.06%
Harris	9	0.56%
Henry	55	3.45%
Houston	8	0.50%

Georgia Department of Education
2008 - 2009 Georgia Special Needs Scholarship Program
End of School Year Report

The table below lists the local education agency (LEA) for students participating in the Georgia Special Needs Scholarship Program.

LEA	Count of Students	Percentage of Students enrolled in GSNS
Jackson	2	0.13%
Jasper	2	0.13%
Jones	3	0.19%
Lamar	6	0.38%
Lee	1	0.06%
Liberty	2	0.13%
Meriwether	5	0.31%
Monroe	3	0.19%
Muscogee	1	0.06%
Newton	41	2.57%
Paulding	13	0.81%
Peach	1	0.06%
Pierce	2	0.13%
Pike	2	0.13%
Richmond	41	2.57%
Rockdale	17	1.07%
Spalding	21	1.32%
Stewart	1	0.06%
Taliaferro	1	0.06%
Troup	17	1.07%
Union	2	0.13%
Walker	1	0.06%
Walton	4	0.25%
Ware	6	0.38%
White	1	0.06%
Whitfield	2	0.13%
Wilkinson	1	0.06%
Total	1,596	100%

**Georgia Department of Education
2008 - 2009 Georgia Special Needs Scholarship Program
End of School Year Report**

Private School Name	Average Tuition
A School for Children, Inc.	\$ 8,697
A Time 4 Learning	\$ 4,500
ADVANCE Academy	\$ 7,000
Advance Learning Center	\$ 6,928
Alexsander Academy	\$ 22,667
Amit, Inc.	\$ 16,715
Anointed Word Christian Schools International	\$ 4,883
Ash Tree Learning Center	\$ 6,200
Atlanta Speech School	\$ 25,503
Augusta Christian Schools	\$ 12,147
Aurora Strategies	\$ 22,000
Ava White Academy	\$ 10,500
Bible Baptist Christian School	\$ 5,779
Blessed Sacrament School	\$ 5,664
Branch Christian Community School	\$ 8,082
Brandon Hall	\$ 37,950
Brunswick Chrisitan Academy	\$ 3,610
BTOC dba Georgia Christian Academy	\$ 9,000
C.H. Terrell Academy	\$ 5,355
Cameron Academy	\$ 7,876
Center Academy	\$ 15,595
Central Fellowship Christian Academy	\$ 6,190
Chatham Academy at Royce	\$ 13,592
Christian Heritage School	\$ 8,271
Chrysalis Experiential Academy, Inc.	\$ 12,208
Clara Mohammed Elementary and W. Deen Mohammed High School	\$ 5,648
Clearwater Academy	\$ 20,000
Community Christian School	\$ 7,228
Cornerstone Christian Academy	\$ 8,800
Cornerstone Community Services Learning Academy	\$ 8,649
Cornerstone Preparatory Academy	\$ 3,270
Cornerstone Schools	\$ 7,550
Covenant Christian Academy	\$ 6,850
Covenant Christian Ministries Academy	\$ 4,459
Cumberland Academy at Sandy Springs	\$ 17,500
Cumberland Academy dba Gables Academy	\$ 16,167
Dawson Street Christian School	\$ 8,500
Decatur Adventist Junior Academy	\$ 4,285
Dominion Christian High School	\$ 10,675

**Georgia Department of Education
2008 - 2009 Georgia Special Needs Scholarship Program
End of School Year Report**

Private School Name	Average Tuition
Eagle's Landing Christian Academy	\$ 8,910
Eaton Academy, Inc.	\$ 15,607
Evangel Temple Christian Academy	\$ 5,430
Evans Christian Academy	\$ 5,393
Faith Christian Academy 1	\$ 6,031
Fayette Christian School	\$ 5,242
Footprints Christian Academy	\$ 7,000
Frederick J.Furtah Preparatory School	\$ 10,727
Green Pastures Christian School	\$ 5,619
Greenforest McCalep Christian Academy	\$ 7,696
Heart of Hope Academy for Children with Special Needs	\$ 18,000
Heritage Academy	\$ 6,075
Holy Innocents' Episcopal School	\$ 16,200
Holy Spirit Preparatory School	\$ 16,700
Hope Christian Academy	\$ 5,500
Hope Christian School of Augusta	\$ 12,000
Hope Schools of Excellence	\$ 14,000
Hopewell Christian Academy	\$ 6,667
Horizon Christian Academy	\$ 7,751
Horizons School	\$ 11,300
IJT Development Center	\$ 7,293
Integrity Christian Academy	\$ 5,591
Jacob's Ladder	\$ 30,150
John Hancock Academy	\$ 5,300
John L. Coble Elementary	\$ 11,175
Kaleidoscope Applied Behavior Analysis, Inc.	\$ 19,870
Katherine and Jacob Greenfield Hebrew Academy of Atlanta	\$ 20,600
Keren or Jewish High School	\$ 21,500
Kingfisher Academy	\$ 7,000
Lakeside Preparatory School	\$ 8,843
Light of the World Christian Academy of Atlanta	\$ 6,975
Lighthouse Christian Academy, Clarkesville	\$ 5,362
Lighthouse Christian Academy, Jonesboro	\$ 7,000
Lithia Christian Academy	\$ 8,200
Lyon Academy Inc. DBA Solid Rock Academy	\$ 9,000

**Georgia Department of Education
2008 - 2009 Georgia Special Needs Scholarship Program
End of School Year Report**

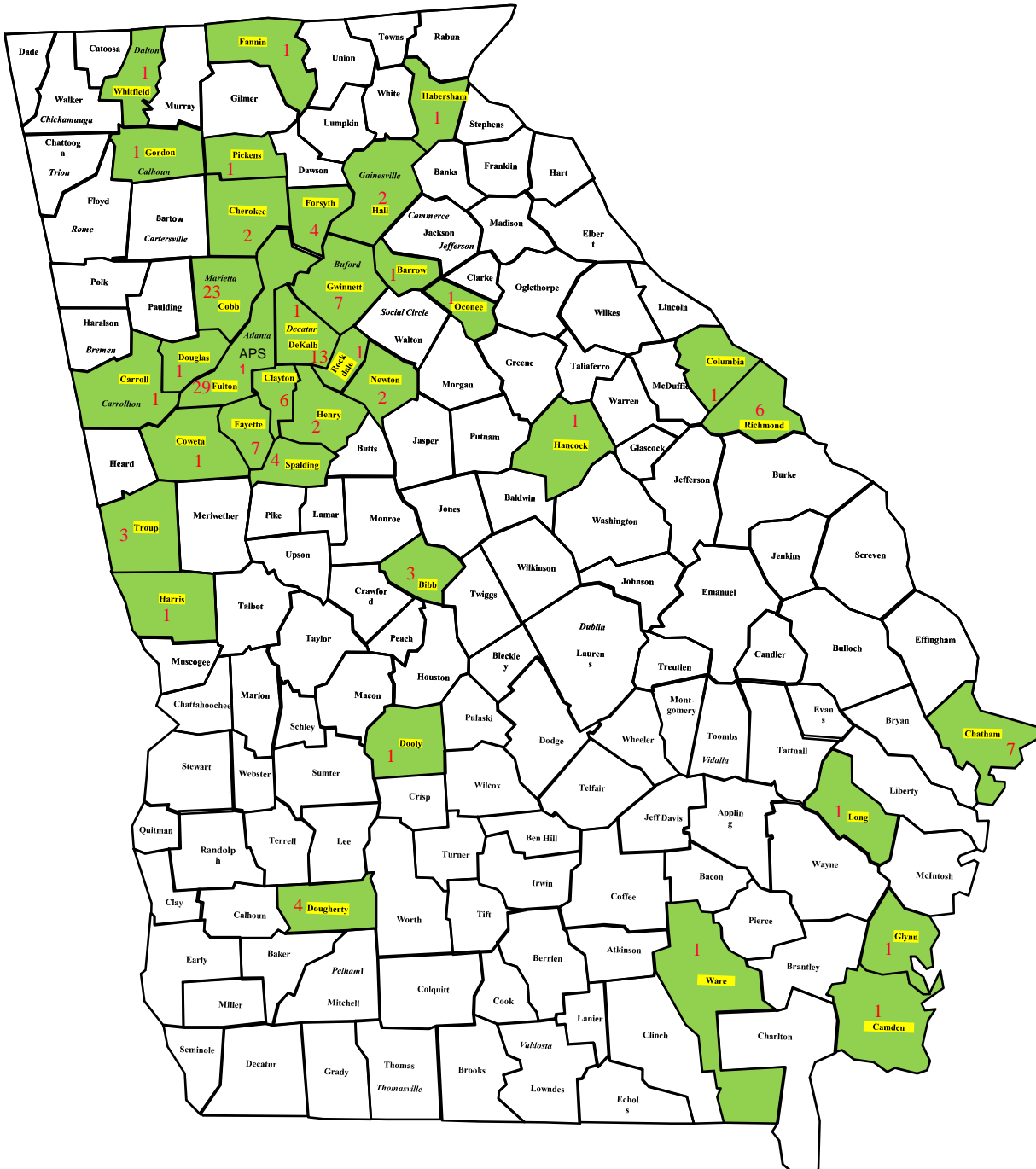
Private School Name	Average Tuition
McGinnis Woods COUNTRY Day School	\$ 9,300
Memorial Day School	\$ 7,392
Mill Springs Academy	\$ 18,873
Miller's Preparatory Academy for Boys	\$ 10,290
Monroe Academy	\$ 6,535
Montessori Community School, Inc. d/b/a Counterpane	\$ 10,000
Mount de Sales Academy	\$ 9,094
Mount Paran Christian School	\$ 11,410
Mount Pisgah Christian School	\$ 19,770
Mountain Area Christian Academy	\$ 7,194
New Birth Christian Academy	\$ 5,459
Omega Learning Center	\$ 9,840
Our Lady of Mercy Catholic High School	\$ 10,640
Paideia School	\$ 17,790
Pathways Academy	\$ 16,000
Peachtree Academy Private School	\$ 5,288
Porter Academy	\$ 16,750
Providence Christian Academy	\$ 15,090
Saint Catherine of Siena Catholic School	\$ 6,400
Saint Francis Day School	\$ 15,418
Saint Joseph Catholic School	\$ 6,082
Sherwood Christian Academy	\$ 7,845
Shoal Creek Adventist School	\$ 6,000
Skipstone Academy	\$ 4,283
Solid Foundation, Inc.	\$ 7,409
Sophia Academy	\$ 19,200
SOUND START	\$ 12,100
Southside Christian School	\$ 6,478
Special Needs Schools of Gwinnett, Inc.	\$ 7,171
St. Paul Academy	\$ 9,000
St. Peter Claver Regional Catholic School	\$ 6,377
St. Teresa's School	\$ 5,013
Stepping Stones Educational Therapy Center, Inc.	\$ 14,997
Street School Academy	\$ 4,500
Summit Learning Center, INC	\$ 24,865

**Georgia Department of Education
2008 - 2009 Georgia Special Needs Scholarship Program
End of School Year Report**

Private School Name	Average Tuition
The 504 School	\$ 16,500
The Bedford School, Inc.	\$ 14,700
The Campus	\$ 8,353
The Community School	\$ 25,250
The Cottage School	\$ 19,205
The Friends School of Atlanta	\$ 13,430
The Hirsch Academy	\$ 25,000
The Howard School	\$ 21,596
The International Education Consortium, Inc. d.b.a. Kingdom Academy	\$ 4,015
The Joseph Sams School	\$ 21,300
The Language School at Christ Mission (dba Brookwood Christian Language School)	\$ 12,891
The Learning Exchange	\$ 5,625
The Lighthouse	\$ 9,700
The Lionheart School	\$ 25,000
The Ron Clark Academy	\$ 12,073
The Schenck School	\$ 22,602
The Swift School	\$ 17,737
Torah Day School of Atlanta	\$ 11,825
Trinity Chapel Academy	\$ 6,227
Victory World Christian School	\$ 5,413
Waverly Hall Christian Academy	\$ 5,250
Westminster Schools of Augusta	\$ 9,601
Wildwood Christian Academy	\$ 9,100
Woodfield Academy	\$ 10,450
Woodlee's Christian Academy	\$ 7,014
Woodward Academy	\$ 24,333

**Georgia Department of Education
2008 - 2009 Georgia Special Needs Scholarship Program
End of School Year Report**

Number of Participating Private Schools by School District



145 Participating Private Schools for 2008 - 2009
Green Highlight = Location of Participating Private Schools
Red Numbers = Number of Participating Private Schools

**Georgia Department of Education
2008 - 2009 Georgia Special Needs Scholarship Program
End of School Year Report**

Private School by Local School District

Private School Name	Local School District
A Time 4 Learning	Newton
Advance Academy	Chatham
Advance Learning Center	Camden
Alexsander Academy	Fulton
Amit Program, Inc.	Fulton
Annoited Word Christian School International*	Clayton
Ash Tree Learning Center	Chatham
Atlanta Speech School	Fulton
Augusta Christian Schools	Columbia
Aurora Strategies Full Day Program	Hall
Ava White Academy	Hall
Bedford School, The	Fulton
Bible Baptist Christian School	Spalding
Blessed Sacrament School	Chatham
Branch Christian Community School	Gwinnett
Brandon Hall	Fulton
Brookwood Christian Language School	Cobb
Brunswick Christian Academy	Glynn
Byne Christian Academy	Dougherty
Cameron Academy	Fulton
Campus, The	Fayette
Center Academy	Cobb
Central Fellowship Christian Academy	Bibb
CH Terrell Academy	Richmond
Chatham Academy at Royce	Chatham
Christian Heritage School	Whitfield
Chryalis Experiential Academy	Cobb
Clear Water Academy	Fayette
Community Christian School	Henry
Community School, The	DeKalb
Cornerstone Christian Academy	Gwinnett
Cornerstone Preparatory Academy	Cobb
Cornerstone Schools Inc.	Forsyth
Cornerstone Community Services Learning Academy	Fulton
Cottage School, The	Cobb
Counterpane (Montessori Community School)	Fayette
Covenant Christian Academy	Forsyth
Covenant Christian Ministries Academy	Cobb
Cumberland Academy of GA	Fulton
Dawson Street Christian School	Troup

**Georgia Department of Education
2008 - 2009 Georgia Special Needs Scholarship Program
End of School Year Report**

Private School by Local School District

Private School Name	Local School District
Decatur Adventist Junior Academy	DeKalb
Dominion Christian High School	Cobb
Eagles Landing Christian Academy	Henry
Eaton Academy	Cobb
Episcopal Day School	Richmond
Evangel Temple Christian Academy	Clayton
Evans Christian Academy	Richmond
Faith Baptist Christian Academy	Long
Faith Christian Academy of Griffin	Spalding
Fayette Christian School	Fayette
Focus Learning & Enrichment Academy	DeKalb
Footprints Christian Academy	Fayette
The Friends School	DeKalb
Fullington Academy	Dooly
Furtah Preparatory School	Cobb
Gables Academy (Cumberland Academy dba)	DeKalb
Georgia Christian Academy	Clayton
Green Pastures Christian School	DeKalb
Greenfield Hebrew Academy of Atlanta (Katherine & Jacob)	Fulton
Greenforest McAlep Christian Academy	DeKalb
Heart of Hope Academy	Fulton
Heritage Academy	Richmond
Hirsch Academy, The	DeKalb
Holy Innocent's Episcopal School	Fulton
Holy Spirit Preparatory School	Fulton
Hope Christian Academy	Barrow
Hope Christian Schools of Augusta	Richmond
Hope Schools of Excellence	DeKalb
Hopewell Christian Academy	Gwinnett
Horizon Christian Academy	Forsyth
Horizons School	Fulton
Howard School, The	Fulton
Integrity Christian Academy	Gwinnett
IJT Development Center	Cobb
Jacob's Ladder	Cobb
John Coble Elementary	Gordon
John Hancock Academy	Hancock
Joseph Sams School, The	Fayette
Kaleidoscope ABA, Inc	Cherokee
Keren Jewish High School	Fulton

**Georgia Department of Education
2008 - 2009 Georgia Special Needs Scholarship Program
End of School Year Report**

Private School by Local School District

Private School Name	Local School District
Kingdom Academy	DeKalb
Kingfisher Academy	Fulton
Lafayette Christian School	Troup
LaGrange Academy	Troup
Lakeside Preparatory School	Carroll
Learning Exchange, The	Cobb
Lighthouse Christian Academy- Jonesboro	Clayton
Lighthouse Christian Academy- Clarkesville	Habersham
Lighthouse, The	Fayette
Light of the World Christian Academy of Atlanta	Fulton
Lionheart School	Fulton
Lithia Christian Academy	Douglas
Lyndon Academy	Cherokee
Lyon Academy dba Solid Rock Academy	Clayton
McGinnis Woods Country Day School	Fulton
Memorial Day School	Chatham
Mill Springs Academy	Fulton
Miller's Preparatory Academy for Boys	DeKalb
Mohammed Schools of Atlanta	Fulton
Monroe Academy	Forsyth
Mount de Sales Academy	Bibb
Mount Paran Christian Academy	Cobb
Mount Pisgah Christian Academy	Fulton
Mountain Area Christian Academy	Fannin
New Birth Christian Academy	DeKalb
Oasis Learning Center	Fayette
Omega Learning Center	Cobb
Our Lady of Mercy Catholic High School	Fulton
Paideia School	Atlanta Public Schools
Pathways Academy	Cobb
Peachtree Academy Private School	Rockdale
Porter Academy	Cobb
Providence Christian Academy	Gwinnett
Ron Clark Academy	Fulton
Saint Catherine of Siena Catholic School	Cobb
Schenck School, The	Fulton
School for Children, A	Dougherty
Sherwood Christian Academy	Dougherty
Shoal Creek Adventist School	Coweta
Skipstone Academy	Spalding

**Georgia Department of Education
2008 - 2009 Georgia Special Needs Scholarship Program
End of School Year Report**

Private School by Local School District

Private School Name	Local School District
Solid Foundation	DeKalb
Sophia Academy	Fulton
Sound Start	Chatham
Southside Christian School	Ware
Special Needs School of Gwinnett	Gwinnett
St. Francis Day School	Cobb
St. Joseph Catholic School	Cobb
St. Paul Academy for Boys	Chatham
St. Peter Claver Regional Catholic School	City of Decatur
St. Teresa's Catholic School	Dougherty
Stepping Stones Educational Therapy Ctr, Inc.	Spalding
Street School Academy	Clayton
Summit Learning	Cobb
Swift School, the	Cobb
The 504 School	Fulton
Torah Day School of Atlanta	Fulton
Trinity Chapel Academy	Cobb
Victory World Christian School	Gwinnett
Waverly Hall Christian Academy	Harris
Westminster Christian Academy	Oconee
Westminster Schools of Augusta	Richmond
Wildwood Christian Academy	Pickens
Woodfield Academy, Inc.	Bibb
Woodlee's Christian Academy	Newton
Woodward Academy	Fulton