

PL Grant Focus Areas

Conferencing & Feedback

Guided Practice
Sharing Resources
Teacher Reflection Sessions

Learning Walks

Core Four "Look Fors"
Effective Monitoring

Action Plans for Teachers

Goal Setting
Promote sustainability

Model Teachers

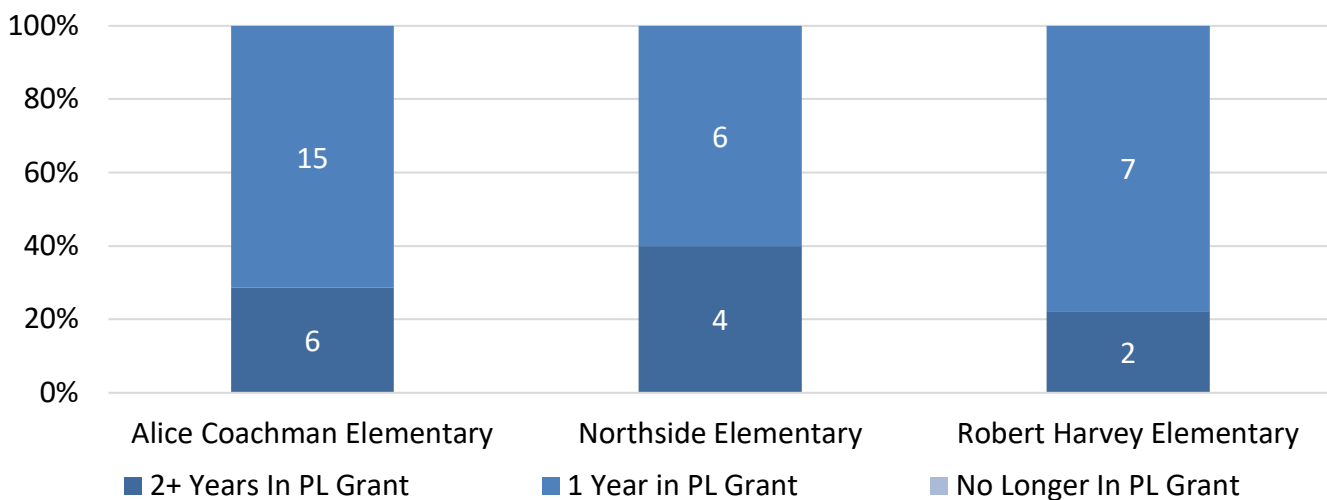
PL Classroom Visits
Peer Coaching

Service and Support

PL Specialists for teachers and leaders
PL Coaches Boot Camp
PL School Teams

Dougherty has three PL grant elementary schools serving grades K-5. Alice Coachman, Northside, and Robert Harvey are each third-year participants.

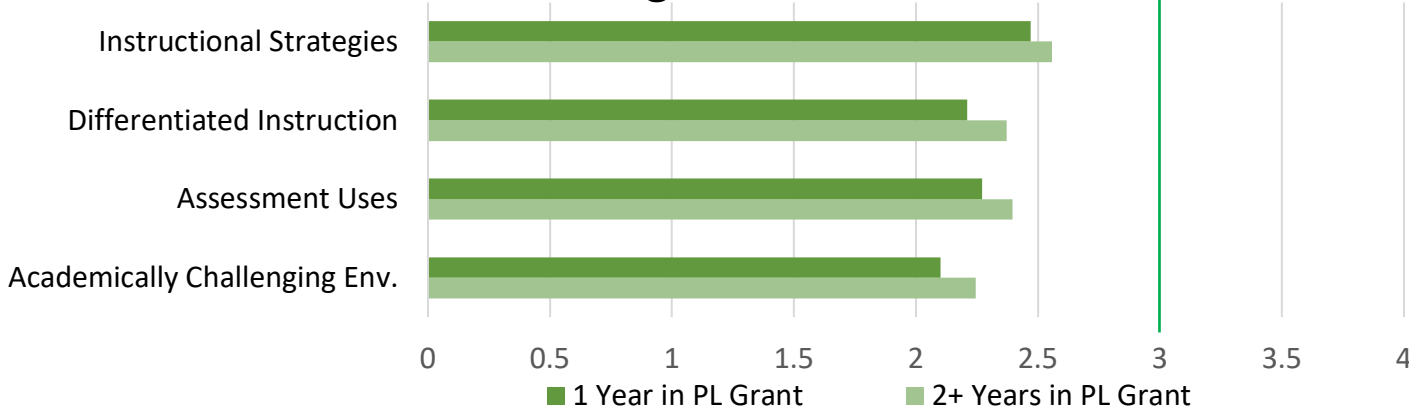
Teacher Breakdown



Learning Walk Data

Each standard is based on a rubric ranging from Level I to Level IV using "Look Fors" that include the best practices of Personalized Learning. Teachers with two ore more years with PL Grant, on average, are excelling compared to teachers with one year. The goal is growth by the end of the year with new and veteran grant teachers attaining Level III on the rubric or at least moving up one level and/or improved commentary from observers.

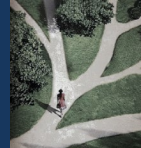
Learning Walk Data



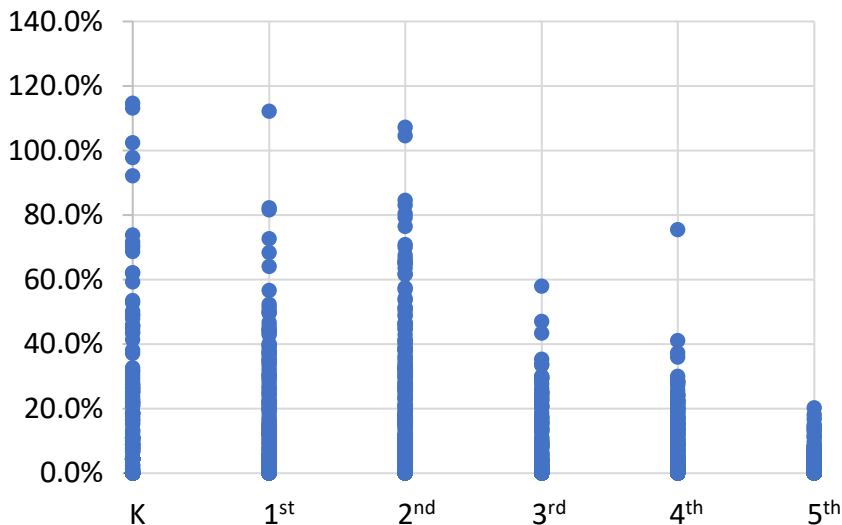
Teacher and Leader Feedback on Personalized Learning

"Engaging students in their work and having them demonstrate and explain it is an important aspect because it gives a synopsis of what the student knows and how they incorporate learning and demonstration into their classwork."

"Students have begun taking more ownership in their class and homework. They are more accountable and trustworthy, even when assignments have not been completed."



Dreambox Growth



Dreambox Online Math Learning Data

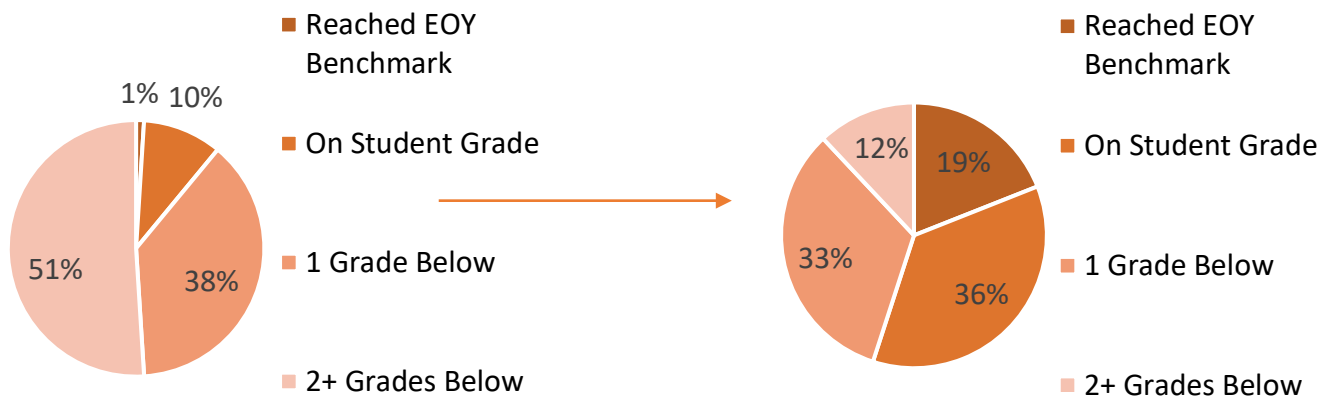
In first the semester of FY 20, the average growth made by students using Dreambox is **9.3%** with growth ranging from K to 5th grade.

Lexia Core 5 Reading Data FY 19

In SY 18-19, PL grant student growth on Lexia Core 5 grew from **11%** on or above level to **31%**, a **182%** increase by the end of the year.

Start of FY 19

End of FY 19



Lexia Core 5 Reading Data FY 20

By the end of the first semester of FY 20, PL grant students increased **56%** on or above grade level on Lexia Core 5.

Start of FY 20

Middle of Year FY 20

