

PL Grant Focus Areas

Conferencing & Feedback

Guided Practice
Sharing Resources
Teacher Reflection Sessions

Learning Walks

Core Four "Look Fors"
Effective Monitoring

Action Plans for Teachers

Goal Setting
Promote sustainability

Model Teachers

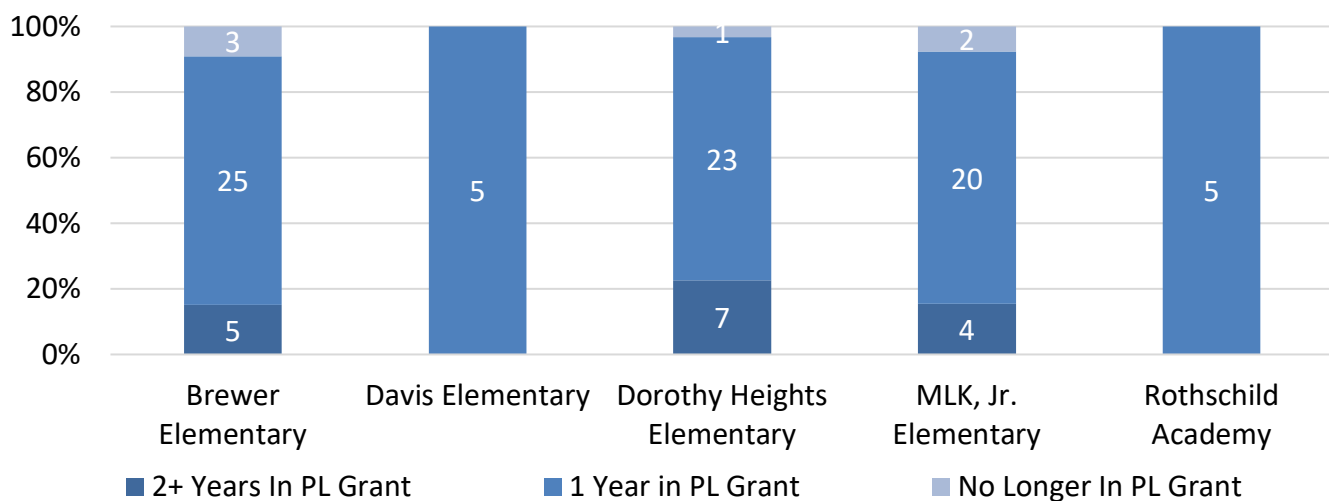
PL Classroom Visits
Peer Coaching

Service and Support

PL Specialists for teachers and leaders
PL Coaches Boot Camp
PL School Teams

Muscogee has four PL grant elementary schools serving grades K-5 and one middle school serving 6-8. Brewer, Dorothy Heights, and MLK, Jr. are each third year of participates, while Davis and Rothschild have just joined this year.

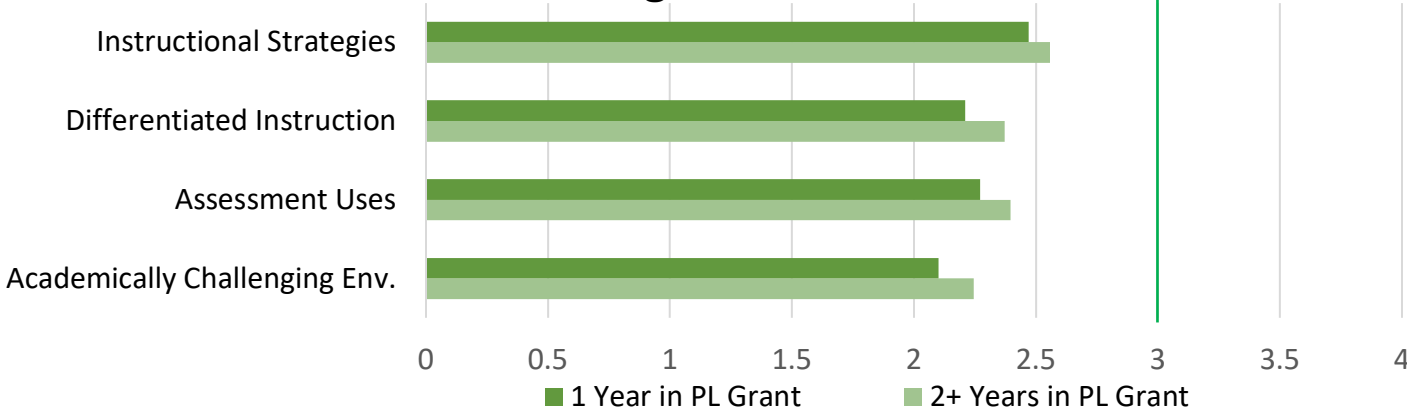
Teacher Breakdown



Learning Walk Data

Each standard is based on a rubric ranging from Level I to Level IV using "Look Fors" that include the best practices of Personalized Learning Teachers with two or more years with PL Grant, on average, are excelling compared to teachers with one year. The goal is growth by the end of the year with new and veteran grant teachers attaining Level III on the rubric or at least moving up one level and/or improved commentary from observers.

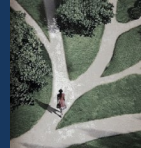
Learning Walk Data



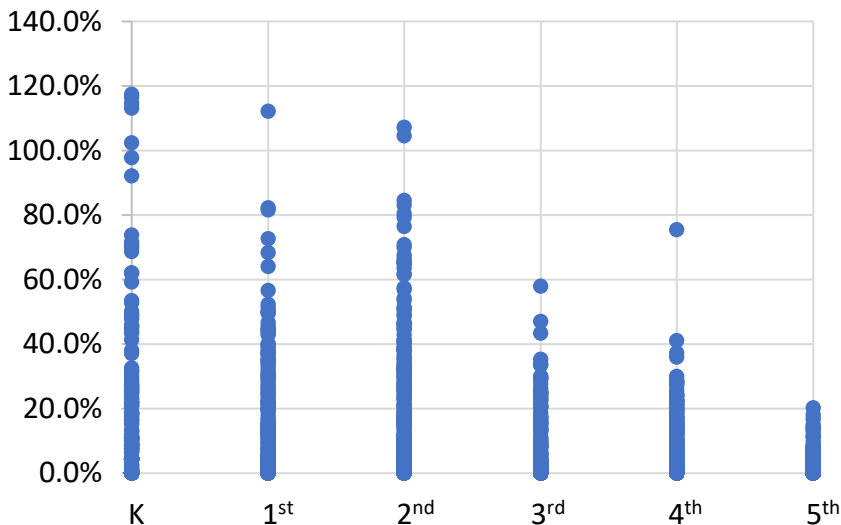
Teacher and Leader Feedback on Personalized Learning

"I have observed teachers using data more frequently and more effectively to drive their instruction. The students are also more engaged and accountable for their learning."

"The biggest change that I have seen as a result of Personalized Learning is that the students seem to be more engaged while the teachers are learning to manage multiple groups simultaneously."



Dreambox Growth



Dreambox Online Math Learning Data

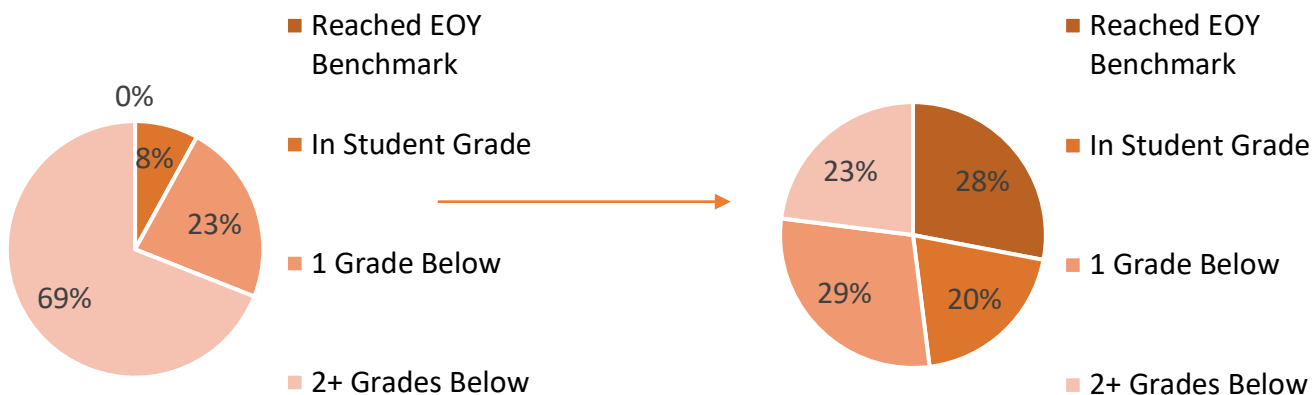
In first the semester of FY 20, the average growth made by students using Dreambox is **9.3%** with growth ranging from K to 5th grade.

Lexia Core 5 Reading Data FY 19

In SY 18-19, PL grant student growth on Lexia Core 5 grew from **8%** on or above level to **48%**, a **500%** increase by the end of the year.

Start of FY 19

End of FY 19



Lexia Core 5 Reading Data FY 20

By the end of the first semester of FY 20, PL grant students increased **167%** on or above grade level on Lexia Core 5.

Start of FY 20

Middle of Year FY 20

